

LSB8MPS3-IP-2.7-13.5-IR60

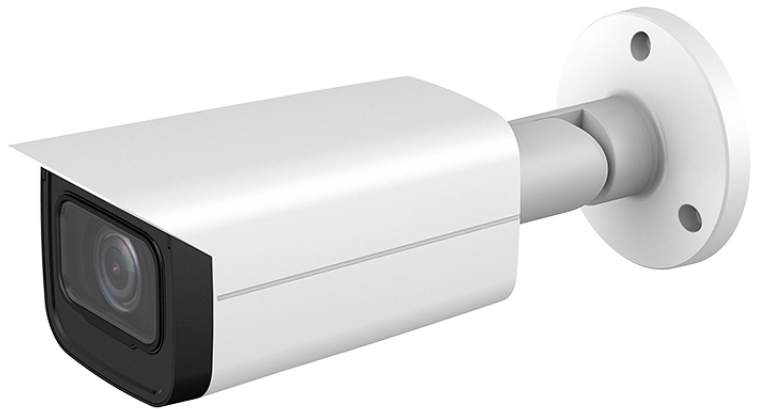
8MP WDR Starlight SMD IR Bullet Camera 2.7~13.5MM Motorized Lens

System Overview

This IP camera delivers 8MP resolution with a 2.7~13.5mm motorized lens. Attractive camera with easy mounting solutions provides a great choice for a variety of small to mid-size application like public safety, transportation, education and commercial buildings.

Features

- 1-2.8" 8 Megapixel progressive CMOS
- Up to H.265+ triple-stream encoding
- 8MP (3840 x 2160)@ 30fps, max
- WDR (120dB), Starlight
- 2.7~13.5mm motorized lens
- IR up to 197' (60m)
- IVS: Intrusion, tripwire
- Abnormality detection
- Max 256 GB SD card option
- IP67, PoE
- SMD (Smart Motion Detection)



Functions

Smart H.265+ technology reduces bit rate and storage requirements by up to 70% when compared to standard H.264 video compression.

Wide Dynamic Range (WDR) The camera achieves vivid images, even in the most intense contrast lighting conditions. For applications with both bright and low lighting conditions that change quickly, true WDR (120 dB) optimizes both the bright and dark areas of a scene at the same time to provide usable video.

Starlight technology helps provide clear colorful video at night or in low light environments.

The camera allows for $\pm 30\%$ input voltage tolerance, suitable for the most unstable conditions for outdoor applications. Subjected and certified to rigorous dust and immersion tests (IP67), the camera is the choice for installation in even the most unforgiving environments.

This camera operates in extreme temperature environments, rated for use in temperatures from -30°C to $+60^{\circ}\text{C}$ (-22°F to $+140^{\circ}\text{F}$) with 95% humidity.

Smart Motion Detection (SMD) is an intelligent algorithm and can effectively recognize target types like Cars and Humans and ignore other types of motion like trees, rain, animals etc. This allows for more efficient alarm triggers.

Specifications

Camera

Image Sensor	1-2.8" 8 Megapixel CMOS
Effective Pixels	3840(H) x 2160(V)
RAM/ROM	512MB / 128MB
Scanning System	Progressive
Electronic Shutter Speed	Auto/Manual, 1/3~1/100,000s
Minimum Illumination	0.007 Lux/F1.5
IR Distance	Distance up to 197' (60m)
IR On/Off Control	Auto/Manual
IR LEDs	4
Pan/Tilt Range	Pan:0° ~360°; Tilt:0° ~90°; Rotation:0° ~360°

Lens

Lens Type	Motorized vari-focal				
Mount Type	M14				
Focal Length	2.7mm~13.5mm				
Max. Aperture	F1.5				
Field of View	Pan:113°-31°, Tilt:58°-17°, Diagonal:138°-36°				
Iris Type	Fixed				
Close Focus Distance	2.62' (0.8m)				
DORI Distance *(estimate)	Lens	Detect	Observe	Recognize	Identify
	W	279'	111'	55'	27'
	T	918'	367'	183'	91'

Professional, intelligent

IVS	Intrusion, tripwire (Detection of vehicle and human)
Intelligent Search	Work together with Smart NVR to perform refine intelligent search, event extraction and merging to event videos

Video

Compression	H.265, H.264, H.264H, H.264B, MJPEG (only supported by the sub stream)
Smart Codec	Smart H.265+/Smart H.264+
Streaming Capability	3 Streams
Resolution	3840 × 2160 (3840 × 2160); 3072 × 2048 (3072 × 2048); 3072 × 1728 (3072 × 1728); 2592 × 1944 (2592 × 1944); 2688 × 1520 (2688 × 1520); 3M (2048 × 1536); 2304 × 1296 (2304 × 1296); 1080p (1920 × 1080); 1.3M (1280 × 960); 720p (1280 × 720); D1 (704 × 576/704 × 480); VGA (640 × 480); CIF (352 × 288/352 × 240)
Frame Rate	Main stream: 3840 × 2160 (1-20 fps by default) 3840 × 2160 (1-25/30 fps when AI function disabled) Sub stream: 704 × 576 (1-25 fps) 704 × 480 (1-30 fps) 3rd stream: 1920 × 1080 (1-25/30 fps)
Bit Rate Control	CBR/VBR
Bit Rate	H.264: 3Kbps ~ 8192Kbps

	H.265: 3Kbps ~ 8192Kbps
Day/Night	Auto (ICR)/Color/B/W
WDR	True WDR (120dB)
White Balance	Auto/Natural/Street Lamp/Outdoor/Manual
Gain Control	Auto/Manual
Noise Reduction	3D DNR
Motion Detection	Off / On (4 Zone, Rectangle)
Region of Interest	Yes (4 areas)
Smart IR	Yes
Image Rotation	0°/90°/180°/270° (Supports 90°/270° with 1080p resolution and lower.)
Mirror	Yes
Privacy Masking	4 areas

Audio

Compression	G.711a; G.711Mu; G726; AAC (Only ZAS supports)
-------------	--

Alarm

Alarm Event	-ZAS: No SD card; SD card full; SD card error; network disconnection; IP conflict; illegal access; motion detection; video tampering; intrusion; tripwire; scene changing; audio detection; voltage detection; defocus detection; external alarm; SMD; safety exception
	-ZS: No SD card; SD card full; SD card error; network disconnection; IP conflict; illegal access; motion detection; video tampering; intrusion; tripwire; scene changing; voltage detection; defocus detection; SMD; safety exception

Network

Ethernet	RJ-45 (10/100Base-T)
Protocol	IPv4; IPv6; HTTP; HTTPS; TCP; UDP; ARP; RTP ; RTSP; RTCP; RTMP; SMTP; FTP; SFTP; DHCP; DNS; DDNS; QoS; UPnP; NTP; Multicast; ICMP; IGMP; NFS; PPPoE; 802.1x; Bonjour
Interoperability	ONVIF(Profile S/Profile G/Profile T); CGI; P2P; Milestone; Genetec
Max. User Access	20 (Total bandwidth: 72M)
Edge Storage	NAS, FTP, SFTP, Micro SD Card 256GB
Web Viewer	IE, Chrome, Firefox
Mgt. Software	Smart PSS, DSS, P2P
Smart Phone	iOS, Android

Certifications

Certifications	CE, UL, FCC
----------------	-------------

Port

Audio Input	1 channel (RCA port) (Only – ZAS supports)
Audio Output	1 channel (RCA port) (Only – ZAS supports)
Alarm Input	1 channel in: 5mA 3V-5V DC (Only – ZAS supports)
Alarm Output	1 channel out: 300mA 12V DC (Only – ZAS supports)

Drivers

Drivers/Profiles	Control 4, SAVANT, URC
------------------	------------------------

Electrical

Power Supply	DC12V / PoE (802.3af)
--------------	-----------------------

Power Consumption	Basic power consumption: 3.0W (12V DC); 3.5W (PoE) Max. power consumption (WDR + H.265 + IR LED intensity): 9.2W (12V DC); 10.7W (PoE)
-------------------	---

Environmental

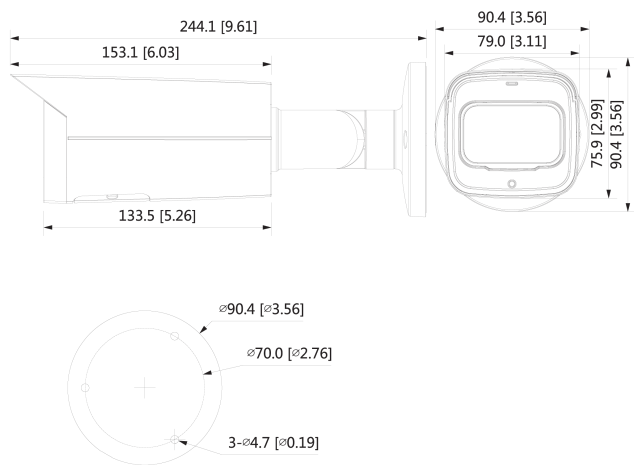
Operating Conditions	-30° C ~ +60° C (-22° F ~ +140° F) / Less than 95% RH
Storage Conditions	-40° C ~ +60° C (-40° F ~ +140° F) / Less than 95% RH
Ingress Protection	IP67

Construction

Casing	Metal
Dimensions	Φ9.61" x 3.26" (Φ244.1mm×90.4mm)
Net Weight	1.90lb (0.86Kg)
Gross Weight	2.43lb (1.10Kg)

Note: ZAS
Z (Zoom)
A (Audio)
S (SD Card)

Dimensions



ZM12222020 Design and specifications are subject to change without notice